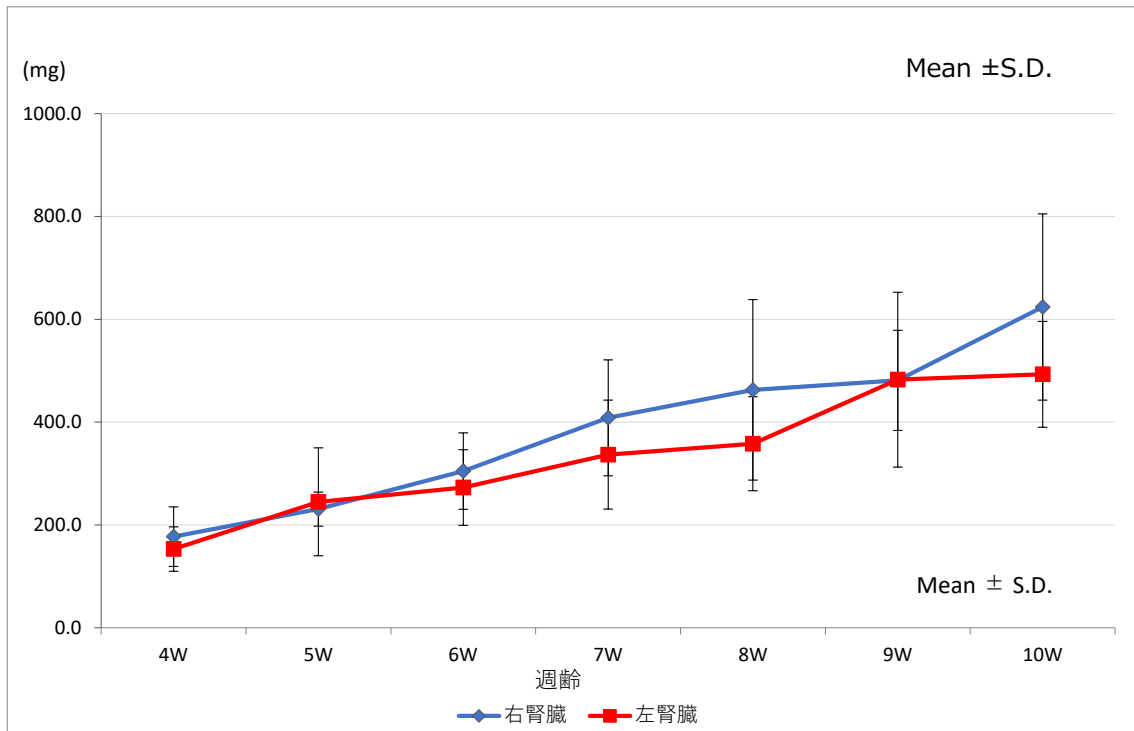
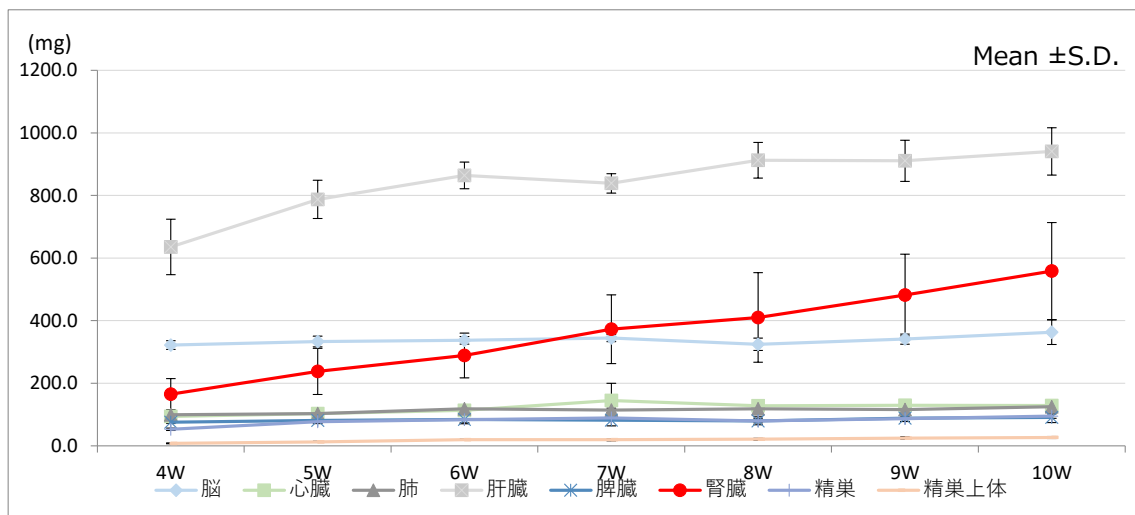


腎臓重量グラフ Kidney Weight Graph



Age	4W	5W	6W	7W	8W	9W	10W
N	5	5	5	5	5	5	5
右腎臓	177.3 \pm 57.8	230.9 \pm 33.1	304.8 \pm 74.2	408.3 \pm 112.7	462.8 \pm 175.4	481.3 \pm 97.3	623.9 \pm 181.0
左腎臓	153.1 \pm 43.1	244.9 \pm 104.9	272.8 \pm 73.5	336.9 \pm 105.9	358.0 \pm 91.4	482.6 \pm 170.1	493.0 \pm 102.9

器官重量グラフ Organ Weight Graph



器官重量対体重比グラフ Organ Weight to Weight Ratio Graph

